

SO YOU HAVE A GPS UNIT: HOW TO GET YOUR DATA INTO GOOGLE EARTH

Workshop

November 17, 2009 4:30 pm - 7:30 pm

Warren Hunting Smith Library at
Hobart & William Smith Campus



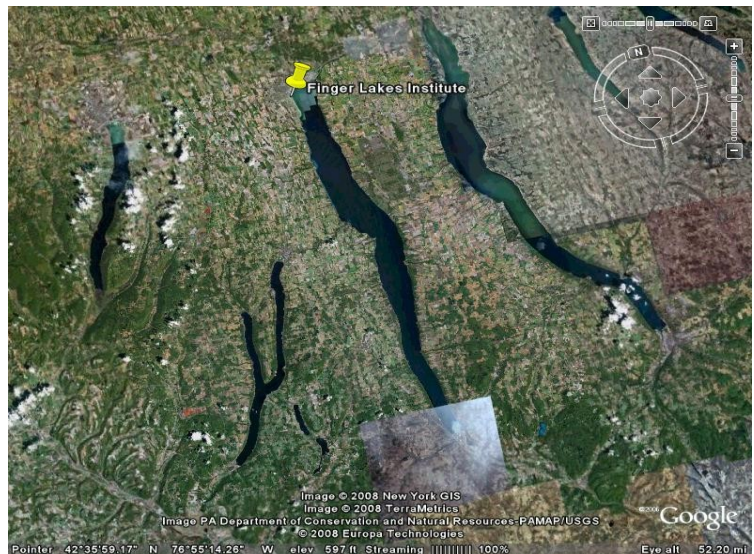
Workshop Format:

4:30 pm - meet at the Warren Hunting Smith Library computer lab on the Hobart and William Smith Campus, building #21 on the campus map:

Campus Map

5:30 - 6:00 pm—break for dinner at the campus café—dinner on own—cost between \$5-\$10

6:00 pm - 7:30 pm - workshop continues at library computer lab.



If you have been looking for ways to utilize the GPS units sitting in your classroom this workshop is for you! This workshop is part two on our series of how to incorporate GPS technology into lesson plans. During this workshop we will cover how to input data and coordinates into your GPS units and then download this information into a Google Earth platform. Registration is required by **November 13**. Please send the following information to the Finger Lakes Institute (address to left) care of Sheila Myers (smyers@hws.edu):

Name: _____

School: _____

Email: _____

FINGERLAKES INSTITUTE

Hobart and William Smith Colleges
601 S. Main St.
Geneva NY 14456
<http://fli.hws.edu>
Phone: 315-781-4380
Fax: 315-781-4399
E-mail: smyers@hws.edu